

Factors Influencing Energy Consumption and Cost-Competitiveness of Plug-in Electric Vehicles

S. Kamguia Simeu², J. Brokate¹, T. Stephens², A. Rousseau²

¹*DLR, Institute of Vehicle Concepts, Pfaffenwaldring 38-40, 70569 Stuttgart, Germany, Jens.Brokate@dlr.de*

²*Argonne National Laboratory, 9700 Cass Avenue, Lemont, IL 60439 USA*

Summary

The widespread adoption of plug-in electric vehicles (PEVs) will depend on public appreciation of the potential savings in ownership costs that PEVs offer over conventional, internal combustion energy vehicles (ICEVs) and hybrid electric vehicles (HEVs), including fuel savings. This study compares the energy consumption and estimated ownership costs of various technologies for multiple drive cycles in the United States and the European Union; identifies and quantifies the impacts of the main parameters influencing the ownership costs of PEVs in comparison with other powertrains for different timeframes, vehicle classes, and technologies; and assesses under what combinations of parameters the cost of PEVs can be competitive with other powertrains.

Keywords: Cost, PHEV (plug in hybrid electric vehicle), EV (electric vehicle), energy consumption

1 Introduction

The cost competitiveness of different drivetrains depends on relative costs of vehicles, fuel, and other cost components. Here, we consider costs from the perspective of a consumer with sufficient foresight to consider relevant costs over the ownership period of the vehicle, or relevant cost of ownership (RCO), as suggested by Mock [1] and used by Redelbach et al. [2] and Rousseau et al. [3]. We examine how the RCO of PEVs compares to competing powertrains under various combinations of fuel consumption, annual driving distance, battery costs, and other factors that can vary significantly between different drivers in different countries. We examine ranges of these factors relevant to drivers in the United States and Germany using estimated future costs of vehicles and fuels.

To the extent that consumers choose vehicles on the basis of ownership costs, how fuel consumption is measured and reported are important. European and U.S. regulators have made or proposed updated fuel economy certification procedures to provide fuel economy estimates that are more representative of real world driving [4, 5]. Fuel economy values reported by U.S. drivers vary over a wide range [6]. Of potentially greater significance to the consumer considering a PEV purchase are vehicle prices and energy costs over the vehicle ownership period. PEV prices are driven by component costs, in particular the cost of the battery pack, but energy costs depend on fuel price and annual driving distance. For plug-in hybrid electric vehicles (PHEVs) and extended range electric vehicles (EREVs), fuel costs also depend on the utility factor (UF)—the fraction of distance driven in charge-depleting (CD) mode—which can differ widely between drivers owing to different charging frequencies and driving distances.

2 Approach and Methodology

2.1 Vehicle Attributes

To evaluate the fuel efficiency benefits of advanced vehicles, each vehicle was simulated using Autonomie [7]. Each vehicle is sized to meet the same vehicle technical specifications such as performance and grade-ability [8].

The energy efficiency was then estimated for the different vehicles over the Worldwide harmonized Light vehicles Test Cycle (WLTC) and the U.S. combined cycle. Conventional and plug-in midsize vehicles were simulated through six different timeframes (2020–2050) for gasoline and diesel fuels. The attributes of future vehicles were taken from Moawad et al. [8]. We focus in this paper only on four different powertrains (conventional; split PHEV [PHEV20]; EREV [PHEV40]; and Battery Electric Vehicles [BEV100, BEV200 and BEV300]). The split PHEV was modelled with one electric motor and a power-split design, and the EREV was modelled with two electric motors and a powertrain similar to the Voltec design.

We assumed technology advancement based on the U.S. Department of Energy (DOE) Vehicle Technology Office research and development goals. Further details on the simulations can be found in Moawad et al. [8].

2.2 Vehicle Energy Consumption Estimates

The above vehicles were simulated in Autonomie under the Worldwide harmonized Light vehicles Test Procedure (WLTP), U.S. Urban Dynamometer Driving Schedule (UDDS), and U.S. Highway Fuel Economy test (HWFET) drive cycles, using the same road load coefficients for all cycles. Adjustments were applied to the UDDS and HWFET drive cycle fuel consumption values in accordance with the U.S. current fuel economy label procedures [4].

To estimate the UF (the fraction of distance driven in CD mode), the daily driving distance was assumed to follow a gamma distribution, which was found to fit detailed driving records from Seattle by Lin et al. [17]. A mean of 61.8 km/day and a mode of 20.6 km/day was assumed for U.S. drivers, based on an analysis of the U.S. 2009 National Household Travel Survey by Krumm [9]. This distribution gave a dependence of UF on the PHEV CD range that approximated the CD range dependence used in the standard practice recommended by SAE International for PHEVs that are charged once per day [10]. This distribution may not be accurate for other populations [11], but it captures the qualitative shape of realistic driving distributions and provides a convenient way to approximate how PHEV UF depends on daily average driving distance [12]. The mean distance was varied to account for different annual driving distances, and the mode was assumed to vary in proportion to the mean. A constant value of 300 driving days per year was assumed. PHEV drivers were assumed to charge once per day.

We estimated the ownership costs under different assumptions to represent U.S. and German consumers. Combinations of the following parameters were evaluated that make PEVs cost-competitive with competing (conventionally powered) vehicles:

- The fuel and electricity consumption as estimated by WLTP and U.S. adjusted drive cycles
- The future vehicle prices, estimated for year 2025
- A range of potential future battery cost estimates
- The fuel prices (reflecting ranges of possible prices in the U.S. and Germany)
- The annual driving distance (ranges representative of U.S. and German drivers)

2.3 Cost Calculations

The vehicle costs are calculated from the characteristics of the components (power, energy, weight, etc.) [8]. Both the vehicle and fuel cost, based on the energy efficiency values, are then used to calculate ownership cost. Maintenance costs for year 2025 were assumed to be 0.05 USD₂₀₁₅/km for all powertrain types. This value was in the middle of the range suggested by Rousseau et al. [3].

The assumptions shown in Table 1 are used to represent the near-term (year 2025) average prices of energy in Europe (Germany) and the United States and were assumed to be constant in future years.

Constant electricity prices were assumed, neglecting alternative rate structures such as time-of-use, tiered rates, or special rates for PEVs.

Energy prices and average annual distance driven in the United States were based on the U.S. Energy Information Agency's Annual Energy Outlook (AEO) for 2017 reference case. Energy prices for Germany were estimated for the year 2025 based on the projected price of crude oil (Brent Spot price of 85.03 USD₂₀₁₅/barrel). High and low energy prices were based on AEO 2017 High Oil Price and Low Oil Price cases. Annual distance driven in new light duty vehicles (LDVs) by U.S. drivers were taken from AEO 2016 reference case. The mileage for German drivers is taken from the latest national transport survey [20].

Table 1: Energy cost assumptions for 2025

Zone	Distance travelled (km/year)	Annual discount rate (%)	Vehicle life (years)	Gasoline price (USD ₂₀₁₅ /liter)	Diesel price (USD ₂₀₁₅ /liter)	Electricity price (USD ₂₀₁₅ /kWh)
Germany	14,000	5	12	1.522	1.482	0.397
United States	22,530	5	12	0.677	0.727	0.116

Cost models were used to estimate manufacturing costs for major vehicle components and subassemblies, which were then summed to give the total manufacturing cost of each vehicle in year 2025 [8]. These manufacturing cost estimates were assumed to be the same for both American and European automakers (Table 2). Cost model parameters were assigned values based on input from U.S. DOE vehicle technology managers and industry experts who provided a range of values from highly optimistic (high case) to pessimistic (low case).

Table 2: Estimated future manufacturing cost

Year	Optimism of cost estimate	Glider cost (USD ₂₀₁₅)	Battery pack cost (USD ₂₀₁₅ /kWh)			
			PHEV 20	PHEV 30	BEV100	BEV200 and BEV300
2025	Low	10,509	500	450	325	325
	Medium	11,319	400	375	250	250
	High	11,631	315	290	170	170

The RCO was calculated from vehicle prices and other costs [3]:

$$C_{RCO} = C_{Invest} + \sum_t^N \left(\frac{C_{Energy,t} + C_{Main,t} + C_{Fees,t}}{(1+r)^t} \right) - \frac{V_{Res}}{(1+r)^N} \quad (1)$$

$$V_{Res} = C_{Invest}(1 - 15 \times 10^{-7} \times N \times VKT - 0.476) \quad (2)$$

where N = ownership period (years)
 r = discount rate (%)
 VKT = annual vehicle kilometers travelled.

Investment costs include the vehicle manufacturing direct costs, manufacturer mark-up (accounted for by a retail price equivalent [RPE] factor), sales tax or value-added tax, both applied to the retail price, incentive (or bonus/malus premium/charge), and initial registration/licensing fees or taxes. For the BEV in the United States, the cost of home electric vehicle service equipment (EVSE) is also included in the investment cost. Given the capacity of BEVs, charging times using only a Level 1 charger do not meet the requirements of most consumers: a recent survey of California drivers found that only 12% of Nissan Leaf owners did not have Level 2 EVSE at home [13]. Because of the higher voltage level (240 V) in Europe, EVSE costs are not considered for Germany.

Residual values after a service time of 10 years were calculated using regression equations developed by Propfe et al. [18] for each powertrain type. These equations were developed from European vehicle sales data and may not accurately model resale values in the United States. Resale values are uncertain, particularly for PEVs, since the used PEV market is very immature. Residual values were estimated as a fraction of the total investment cost rather than purchase price, since the investment cost was assumed to approximate more closely the transaction cost as it includes incentives and fees, and since evidence suggests that incentives decrease residual values [19]. A residual value of zero was assumed after a service time of twelve years or a total distance travelled higher than 338,000 kilometers.

$$C_{Invest} = (C_{Manuf})(F_{RPE})(1 + Tax_{Sales}) - C_{Incentives} + C_{Fee,init} + C_{Batt repl} + C_{Home EVSE} \quad (2)$$

where C_{Invest} = Total investment (upfront) cost
 C_{Manuf} = Feebate (bonus/penalties) or incentive, see Table 3
 F_{RPE} = Retail price equivalent or mark-up factor = 1.5 [14]
 $C_{Incentives}$ = Feebate (bonus/penalties) or incentive, see Table 3. Incentives are shown as positive if they decrease the cost and negative if they increase the cost.
 $C_{Fee, init}$ = Fees payable upon vehicle purchase see Table 3
 Tax_{Sales} = State sales tax
 $C_{Batt repl}$ = Battery replacement (PHEV and BEV); we assumed no battery replacement in this paper.
 $C_{Home EVSE}$ = Average cost of installing Level 2 EVSE [15]

The incentives have a high impact on the RCO and are geographically dependant. In the United States, we considered only the federal subsidies (tax credits) for plug-ins, which depend on the battery total rated capacity in kWh as follows: 2,500 U.S. dollars (USD) for each PEV with at least 5 kWh total battery capacity, plus 417 USD for each kWh in excess of 5 kWh, up to a maximum of 7,500 USD. We treat these values as 2015 USD. In reality, the subsidy decreases for each automaker after the automaker sells more than 200,000 PEVs, which was neglected in this study. In Germany, the subsidies are 3,000 euros (EUR) for each PHEV and 4,000 EUR for each BEV [16]. Using a conversion factor of one EUR to 1.0598 USD results in 3,179 USD for each PHEV and 4,239 USD for each BEV. These values are also treated as 2015 USD.

Table 3: Values for initial fees, incentives, and EVSE for year 2025 in USD₂₀₁₅

Area	Incentives, Costs, and Fees	Conventional Spark Ignition	Conventional Compression Ignition	PHEV	BEV
Germany	Incentives	0	0	3,179	4,239
	Initial fee	22	22	22	22
	Motor tax (USD ₂₀₁₅ , period average)	29	121	0	0
	EVSE cost	0	0	0	0
	Maintenance (USD ₂₀₁₅ /km)	0.06	0.06	0.06	0.05
U.S. federal	Incentives	0	0	> 2,500	> 2,500
	Initial fee	186	186	186	186
	EVSE cost	0	0	0	1,204
	Maintenance (USD ₂₀₁₅ /km)	0.05	0.05	0.05	0.05

We evaluated sensitivities to assumptions by examining ranges of fuel prices, battery costs, and annual distance travelled. From these results, we examined which factors are most important in the United States and Germany for cost of ownership of PHEVs and BEVs, and under what combination of conditions PHEVs and BEVs are cost-competitive with other drivetrains.

3 Results

To be concise, this paper primarily focuses on ownership costs of a 2025 midsize car for average advanced technology and medium optimism cost estimates (cf. Table 2). In addition, we assumed a period of 10 years of ownership and that the customer is not going to change the battery pack during this period. The energy prices applied are displayed in Table 1. The incentives applied, EVSE installation cost, and other ownership fees are displayed in Table 1 according to the geographic area. Glider costs were assumed to be the same for the United States and Europe but vary by year (cf. Table 2). We also assumed that after the battery guaranty period (eight years or 160,000 km travelled), the total energy capacity of the battery pack decreases by 4% each year.

3.1 Energy Consumption

Fuel and electricity (energy) consumption by different powertrains (conventional, PHEV, and BEV) are compared in Figure 1. One can notice that the U.S. cycle, even though it is less aggressive than the WLTC, leads to higher vehicle energy consumption, especially for electrified vehicles, because of its real-world adjustment factor. The right-hand axis of Figure 1 shows the relative difference in energy consumption in the U.S. combined cycle vs. the WLTC by each vehicle type.

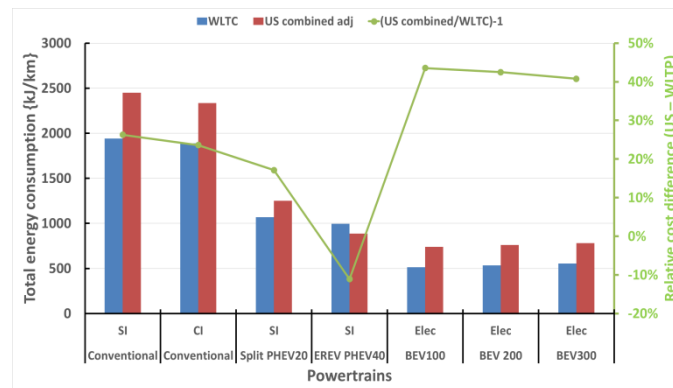


Figure 1: Energy consumption comparison by powertrain and driving cycle

3.2 Energy Costs

Figure 2 shows the cost metric in Europe (using the WLTC as reference) and in the United States (with the U.S. combined adjusted cycle as reference). Mainly because of higher European energy prices (cf. Table 1), the cost of the energy per kilometer travelled is higher in Europe than in the United States.

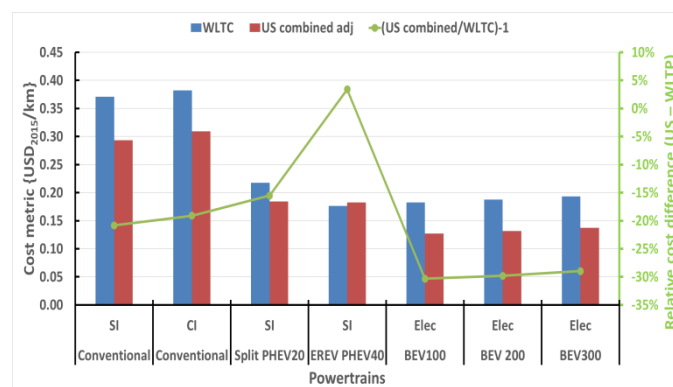


Figure 2: Cost metric comparison by powertrain and driving cycle

To properly compare the overall cost of ownership between the United States and Germany, we need to include the manufacturing cost, the maintenance cost over the years, taxes, and fees. Negative costs (incentives) are shown below the axis and the total resulting RCO is shown as a red line.

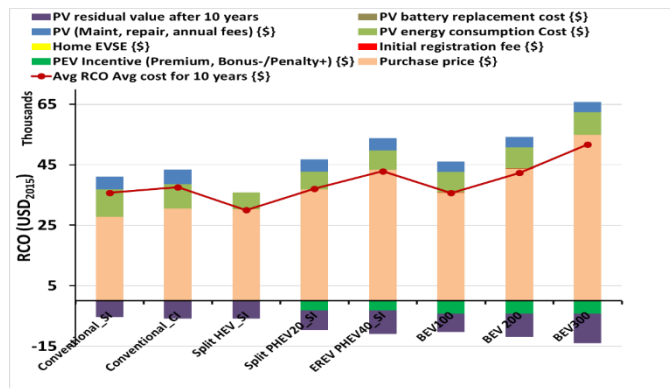


Figure 3: RCO comparison between powertrains for 10 years of ownership in Germany using the WLTC as reference

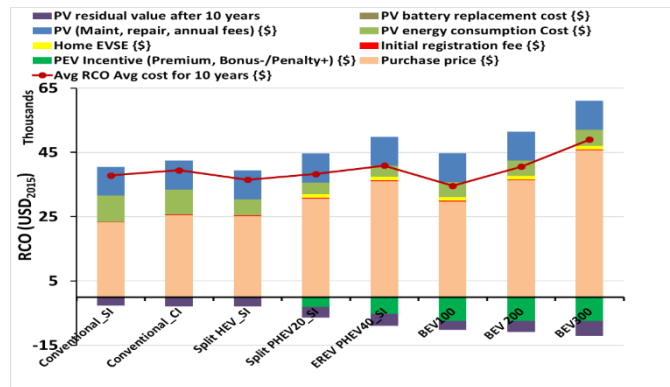


Figure 4: RCO comparison between powertrains for 10 years of ownership in the United States using the U.S. combined adjusted driving cycle as reference

For an ownership period of 10 years, only the BEV100 in both Germany and the United States seems to be cost competitive with conventionally powered cars when using the current market price as reference (cf. Figures. 3 and 4). However, as shown in Figure 5, even though the U.S. driving cycle leads to higher energy consumption for electrified vehicles compared to the WLTC, fuel savings by PEVs are higher in Germany than in the United States because of the high price of fuel.

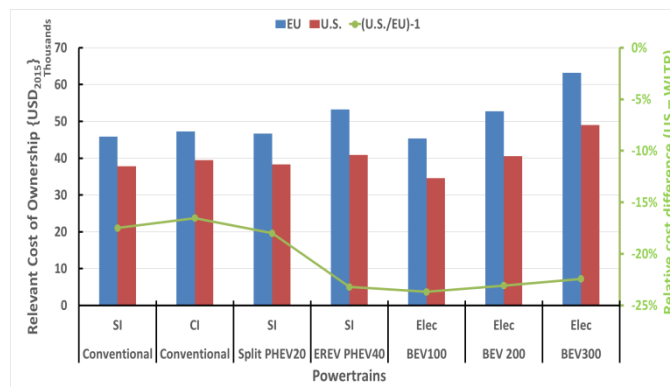


Figure 5: RCO comparison between the United States and Germany for 10 years of ownership

3.3 Impacts of Other Factors

We evaluated the effect of different factors on the competitiveness of PEVs on the U.S. and German markets.

3.2.1 Manufacturing cost

The battery manufacturing cost has a direct impact on the selling price of the vehicle and hence on the customer purchase decision. The heat maps below (Tables 4 and 5) display the RCO by powertrain for a range of manufacturing battery costs. The colour of each cell in the table indicates whether the RCO is higher (red) or lower (green) in comparison to the others. Values in Tables 4 and 5 are based on the annual distance, discount rate, and fuel prices shown in Table 1. Tables 4 and 5 show that the PEVs become more competitive as the battery cost decreases. For instance, the BEV300 becomes even more economical in the United States than conventional vehicles at 100 USD₂₀₁₅/kWh or less, for an ownership period of 10 years.

Table 4: RCO by battery cost and powertrain for 10 years of ownership in the United States using the U.S. combined adjusted driving cycle as reference

		Conventional	Conventional	Split PHEV20	EREV PHEV40	BEV100	BEV 200	BEV300
Variable 1		SI	CI	SI	SI	Elec	Elec	Elec
Battery costs {USD_2015/kWh}	400	37,841	39,467	38,279	41,523	39,643	49,002	62,414
	300	37,841	39,467	36,876	38,949	36,270	43,355	53,472
	200	37,841	39,467	35,474	36,376	32,896	37,708	44,530
	100	37,841	39,467	34,873	34,378	29,523	32,061	35,588
	50	37,841	39,467	34,873	34,378	27,836	29,238	31,117

Table 5: RCO by battery cost and powertrain for 10 years of ownership in Germany using the WLTC as reference

		Conventional	Conventional	Split PHEV20	EREV PHEV40	BEV100	BEV 200	BEV300
Variable 1		SI	CI	SI	SI	Elec	Elec	Elec
Battery costs {USD_2015/kWh}	400	35,734	37,582	37,064	43,543	41,207	51,541	66,357
	300	35,734	37,582	35,531	40,728	37,518	45,366	56,578
	200	35,734	37,582	33,997	37,914	33,829	39,191	46,799
	100	35,734	37,582	33,340	35,729	30,140	33,015	37,021
	50	35,734	37,582	33,340	35,729	28,295	29,928	32,131

3.2.2 Annual distance travelled

As expected, the annual distance travelled by the customer will have a direct impact on the cost competitiveness between different powertrains (cf. Figure 6); higher annual distance travel plays in favour of the PEVs. For instance, in the United States, at around 24,000 km/year for 10 years of ownership, the PHEV20 and BEV100 become more economical than the conventional spark ignition (SI) vehicle (Table 6). In Germany, largely owing to the higher fuel and electricity prices, the PHEV20 becomes competitive at higher distances travelled than in the United States (cf. Tables 6 and 7).

Table 6: RCO by annual distance travelled and powertrain for 10 years of ownership in the United States using the U.S. combined adjusted driving cycle as reference

		Conventional	Conventional	Split PHEV20	EREV PHEV40	BEV100	BEV 200	BEV300
Variable 1		SI	CI	SI	SI	Elec	Elec	Elec
Annual VKT {Km}	40,233	53,695	55,285	52,059	54,129	47,547	54,522	64,172
	32,186	47,112	48,779	46,503	48,956	42,379	48,968	58,331
	24,140	39,385	41,019	39,648	42,226	35,882	41,937	50,556
	16,093	31,660	33,260	32,842	35,502	29,386	34,908	42,781
	8,047	23,936	25,502	26,243	28,822	22,891	27,879	35,007

Table 7: RCO by annual distance travelled and powertrain for 10 years of ownership in Germany using the WLTC as reference

		Conventional	Conventional	Split PHEV20	EREV PHEV40	BEV100	BEV 200	BEV300
Variable 1		SI	CI	SI	SI	Elec	Elec	Elec
Annual VKT {Km}	40,233	65,514	65,916	62,098	69,968	58,991	69,494	81,625
	32,186	57,323	58,260	55,559	63,002	54,235	62,480	74,159
	24,140	47,769	49,109	47,375	54,082	46,021	53,541	64,216
	16,093	38,217	39,960	39,192	45,161	37,808	44,602	54,274
	8,047	28,667	30,813	31,009	36,223	29,597	35,665	44,333

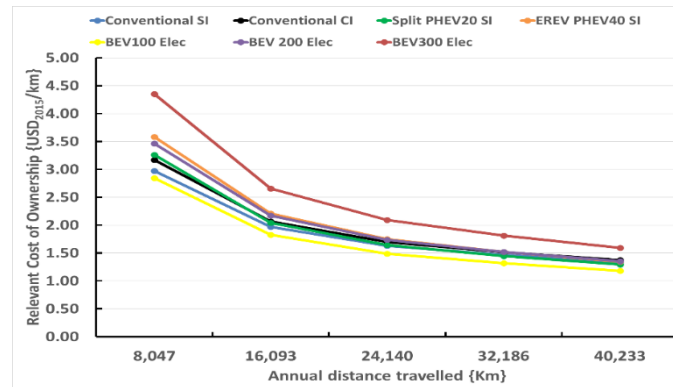


Figure 6: RCO by annual distance travelled and powertrain for 10 years of ownership in the United States using the U.S. combined adjusted driving cycle as reference

3.2.3 Energy price

The impact of fuel price is far more important in Europe. Table 8 shows the impact of a potential fuel price evolution in Germany. At a gasoline price of 2.38 USD₂₀₁₅/liter (9.01 USD₂₀₁₅/gallon), the PHEV20 and the BEV100 will become more economical than conventional cars. The electricity price also plays a role in the overall cost for the owner of a PEV, as shown in Table 9. At electricity prices as low as 0.08 USD₂₀₁₅/kWh, the PHEV20 and the BEV200 become cost competitive over an ownership period of 10 years. However, the RCO of the PHEV40 or the BEV300 are higher than for conventional cars even at an electricity rate as low as 0.08 USD₂₀₁₅/kWh.

Table 8: RCO by fuel price and powertrain for 10 years of ownership in Germany using the WLTC as reference

		Conventional	Conventional	Split PHEV20	EREV PHEV40	BEV100	BEV 200	BEV300		
Variable 1		SI	CI	SI	SI	Elec	Elec	Elec		Variable 2
Gasoline price {USD_2015/Liter}	2.38	40,793	42,383	38,938	44,243	35,673	42,278	51,689	2.38	Diesel price {USD_2015/Liter}
	1.98	38,450	40,258	38,070	43,592	35,673	42,278	51,689	1.98	
	1.32	34,544	36,716	36,624	42,509	35,673	42,278	51,689	1.32	
	0.92	32,201	34,591	35,756	41,859	35,673	42,278	51,689	0.92	
	0.26	28,296	31,049	34,309	40,775	35,673	42,278	51,689	0.26	

Table 9: RCO by fuel price and powertrain for 10 years of ownership in Germany using the WLTC as reference

		Conventional	Conventional	Split PHEV20	EREV PHEV40	BEV100	BEV 200	BEV300
Variable 1		SI	CI	SI	SI	Elec	Elec	Elec
Electricity price {\$/kWh}	0.4	35,734	37,582	37,083	42,868	35,725	42,332	51,745
	0.32	35,734	37,582	36,572	42,086	34,341	40,899	50,253
	0.24	35,734	37,582	36,060	41,303	32,957	39,465	48,761
	0.16	35,734	37,582	35,548	40,520	31,573	38,031	47,269
	0.08	35,734	37,582	35,037	39,737	30,190	36,598	45,777

For the combination of factors considered here (Table 1), the U.S. gasoline price must reach 1.32 USD₂₀₁₅/liter (5.0 USD₂₀₁₅/ gallon) for most PEVs to become cost competitive (cf. Table 10).

Table 10: RCO by fuel price and powertrain for 10 years of ownership in the United States using the U.S. combined adjusted driving cycle as reference

		Conventional	Conventional	Split PHEV20	EREV PHEV40	BEV100	BEV 200	BEV300
Variable 1		SI	CI	SI	SI	Elec	Elec	Elec
Gasoline price {USD_2015/Liter}	2.38	58,279	39,467	44,623	44,764	34,583	40,532	49,001
	1.98	53,517	39,467	43,145	43,859	34,583	40,532	49,001
	1.32	45,581	39,467	40,681	42,351	34,583	40,532	49,001
	0.92	40,819	39,467	39,203	41,445	34,583	40,532	49,001
	0.26	32,882	39,467	36,739	39,937	34,583	40,532	49,001

3.2.4 Combination of factors

We examined ranges of factors to determine what combinations enable BEVs to be cost-competitive with conventional SI vehicles. The ratio of the RCO of a BEV200 to that of a conventional SI vehicle under different assumptions is shown in Figures 7 and 8. Those figures display the contours of a constant $RCO_{BEV200}/RCO_{ConvSI}$ ratio for ranges of battery costs and annual distance travelled for three different electricity prices. All others parameters remain constant (as given in Tables 1, 2, and 3).

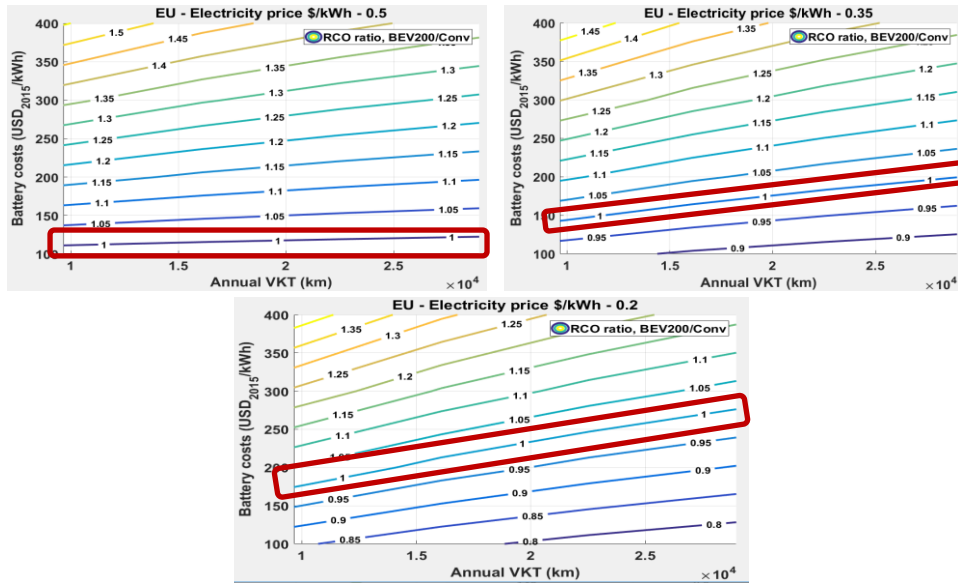


Figure 7: RCO ratio between BEV200 and conventional SI by annual distance travelled, battery cost, and electricity price, for 10 years of ownership in Germany using WLTC as reference

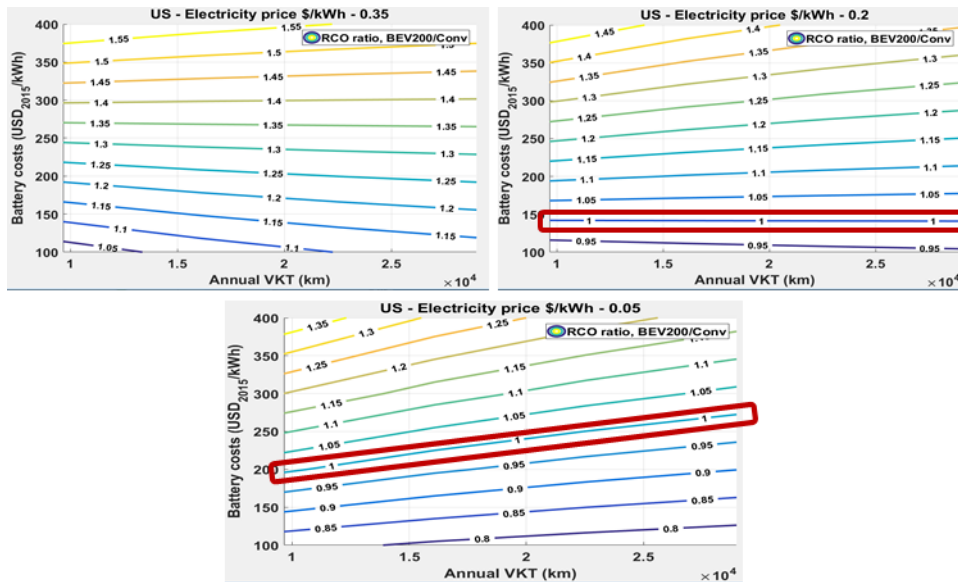


Figure 8: RCO ratio between BEV200 and conventional SI by annual distance travelled, battery cost, and electricity price, for 10 years of ownership in the United States using the U.S. combined adjusted driving cycle as reference

In Germany, mainly due to the high fuel cost for conventional vehicles, at high annual distance travelled, the BEV200 can be competitive with conventional vehicles (Figure 7). Furthermore, the electricity price will also have an impact on both the cost ratio between BEV200 and conventional SI, and on the way the annual VKT and battery cost will affect this ratio. Indeed, (cf. contours outlined in red in Figures 7 and 8) the slope of the $RCO_{BEV200}/RCO_{ConvSI}$ lines increases as electricity price decreases and the difference in the energy cost per kilometer increases. As shown in Figure 8, at high electricity prices (0.35 USD₂₀₁₅/kWh in the United States) while others parameters remain constant, the slope of contours become negative, since the energy cost per kilometer for the BEV is higher than that of the conventional vehicle, and the RCO ratio increases with annual distance travelled.

4 Conclusions

PEVs can be cost-competitive with other powertrains under favourable conditions. These include various combinations of high fuel prices, low battery costs, and high annual driving distances. Energy savings from PEVs, especially BEVs, are somewhat sensitive to the fuel and electricity consumption estimates. The differences in fuel costs between the WLTP and adjusted U.S. cycles indicate the importance of fuel consumption values. These differences become more important under high fuel prices. When energy costs per kilometer for PEVs and conventional vehicles differ widely (high gasoline price and low electricity price), annual distance travelled becomes an important factor and PEVs can be cost competitive at high annual VKT. When energy cost per kilometer is similar, purchase price differences are more important, and PEV cost competitiveness is more sensitive to assumptions about battery costs. Since future fuel process are uncertain, and driving distances differ between drivers, it is difficult to predict how competitive PEVs will be, but it is important to consider the interactions of multiple factors. However, there are factors that we did not consider that influence BEV adoption, such as the difference between the acceleration performance of PEVs and conventional vehicles, the limited range of the BEV100 and BEV200, and also availability of public charging stations.

Acknowledgments

The authors would like to acknowledge the financial support of the U.S. Department of Energy Vehicle Technologies Office. The UChicago Argonne, LLC, operator of Argonne National Laboratory (Argonne), has created the submitted manuscript. Argonne, a U.S. Department of Energy Office of Science laboratory, is operated under Contract No. DE-AC02-06CH11357. The U.S. Government retains for itself, and others acting on its behalf, a paid-up nonexclusive, irrevocable worldwide license in said article to reproduce, prepare derivative works, distribute copies to the public, and perform publicly and display publicly, by or on behalf of the Government.

References

- [1] P. Mock. "Entwicklung eines Szenariomodells zur Simulation der zukünftigen Marktanteile und CO₂ Emissionen von Kraftfahrzeugen (VECTOR21)." Universität Stuttgart, Stuttgart (2010).
- [2] M. Redelbach, E. D. Özdemir, and H. E. Friedrich. "Optimizing battery sizes of plug-in hybrid and extended range electric vehicles for different user types." *Energy Policy* 73 (2014): 158–68. doi:10.1016/j.enpol.2014.05.052.
- [3] A. Rousseau, T. Stephens, J. Brokate, E. D. Oezdemir, M. Kloetzke, S. A. Schmid, P. Ploetz, F. Badin, J. Ward, and O. T. Lim. "Comparison of energy consumption and costs of different plug-in vehicles in European and American context." EVS28, Korea (2015).
- [4] Protection of Environment, 40 C.F.R. Vol. 32, Part 600, Fuel Economy and Greenhouse Gas Exhaust Emissions of Motor Vehicles, <https://www.epa.gov/laws-regulations/regulations>, accessed on July 5, 2017.
- [5] European Union Regulation (EU) No 333/2014 of the European Parliament and of the Council of 11 March 2014 amending Regulation (EC) No 443/2009 to define the modalities for reaching the 2020 target to reduce CO₂ emissions from new passenger cars (2014).
- [6] Z. Lin and D. Greene. "Predicting individual fuel economy." *SAE Int. J. Fuels Lubr.* 4 no. 1 (2011): 84–95. doi:10.4271/2011-01-0618.
- [7] Argonne National Laboratory. Autonomie Toolkit, <http://www.autonomie.net/index.html>, accessed on July 5, 2017.
- [8] A. Moawad, N. Kim, N. Shidore, and A. Rousseau. "Assessment of vehicle sizing, energy consumption and cost through large scale simulation of advanced vehicle technologies." Argonne National Laboratory report ANL/ESD-15/28 (2016). http://www.autonomie.net/publications/fuel_economy_report.html.

- [9] J. Krumm. “How people use their vehicles: Statistics from the 2009 National Household Travel Survey.” SAE Technical Paper 2012-10-0489 (2012), doi: 10.4271/2012-01-0489.
- [10] SAE International. “Utility factor definitions for plug-in hybrid electric vehicles using travel survey data,” http://standards.sae.org/j2841_201009/, 2010.
- [11] P. Plötz, N. Jakobsson, and F. Sprei. “On the distribution of individual daily driving distances.” *Transport Research Part B: Methodological*. 101 (2017): 213–227.
- [12] Z. Lin, and D. L. Greene. “Significance of daily VMT variation over time and among drivers on assessment of PHEV energy impact.” *Proceedings of 90th Annual Meeting of the Transportation Research Board Compendium of Papers*. No. 11-2242 (2011).
- [13] G. Tal, M. S. Nicholas, J. Davies, and J. Woodjack. “Charging behavior impacts on electric VMT: evidence from a 2013 California drivers survey.” Presented at the Transportation Research Board Annual Meeting, Washington, DC, Jan. 2014.
- [14] A. Vyas, D. Santini, and R. Cuenca, R. “Comparison of indirect cost multipliers for vehicle manufacturing: Technical memorandum in support of electric and hybrid vehicle cost estimation studies.” Technical memorandum, Argonne National Laboratory, Argonne, IL (Apr. 2000).
- [15] Electric Power Research Institute (EPRI). “Total cost of ownership model for current plug-in electric vehicles.” EPRI Technical Report no. 3002001728, Palo Alto, CA: EPRI (2013). <https://www.epri.com/#/pages/product/000000003002001728/>, accessed July 7, 2017.
- [16] Federal Ministry for Economic Affairs and Energy (2017). “Electric mobility in Germany.” <http://www.bmwi.de/Redaktion/EN/Dossier/electric-mobility.html>, accessed July 7, 2017.
- [17] Z. Lin, J. Dong, C. Liu, and D. Greene, “PHEV energy use estimation: Validating the Gamma Distribution for representing the random daily driving distance.” *Transportation Research Record* 2287-05 (2012).
- [18] B. Propfe, M. Redelbach, D. Santini, and H. E. Friedrich. “Cost analysis of plug-in hybrid electric vehicles including maintenance and repair costs and resale values.” Presented at Electric Vehicle Symposium 26, Los Angeles, USA, May 2012.
- [19] P. Holweg, and P. A. Kattuman. “The incentive whiplash: Sales discounts and the dynamics of residual value in the automobile industry.” (unpublished), <http://www.eea-esem.com/files/papers/EEA-ESEM/2006/2414/IncentiveWhiplash.pdf>, accessed February 14, 2015.
- [20] R. Follmer, D. Gruschwitz, B. Jesske, S. Quandt, B. Lenz, C. Nobis, K. Köhler and M. Mehlin. “Mobilität in Deutschland 2008: Ergebnisbericht Struktur–Aufkommen–Emissionen–Trends.” Federal Ministry for Transport, Building and Urban Development, Germany (2010).

Nomenclature

AEO	Annual Energy Outlook	HWFET	Highway Federal Emissions Test
BEV	battery electrical vehicle	ICEV	internal combustion engine vehicle
CD	charge-depleting	LDV	light duty vehicle
DOE	Department of Energy	PEV	plug-in electrical vehicle
EREV	extended range electric vehicles	PHEV	plug-in hybrid electrical vehicle
EVSE	electric vehicle service equipment	RCO	Relevant Cost of Ownership
HEV	hybrid electric vehicle	RPE	Retail Price Equivalent

SI	spark ignition	VTO	Vehicle Technology Office
UDDS	Urban Dynamometer Driving Schedule	WLTC/P	Worldwide harmonized light vehicles Test Cycle / Procedure
UF	utility factor		
USD	U.S. dollars		

Authors



Severin Kamguia Simeu is a research and modelling engineer at Argonne National Laboratory. He works in the area of modelling and simulation to evaluate the fuel and energy consumption impact of advanced vehicle technologies. He received his engineering degree in mechatronic from ENSEA in France in 2015 and Master's degree in hybrid powertrain engineering from IFPEN in France in 2015.



Jens Brokate studied Business Engineering and Management in Karlsruhe and Melbourne. His professional experience comprises activities at ZF Friedrichshafen AG and a consulting firm. Mr. Brokate gained scientific experience at the Fraunhofer Institute for Systems and Innovation Research before joining the DLR Institute of Vehicle Concepts in 2012. He is working in the area of technology assessment of alternative powertrains with a focus on the modelling of vehicle markets.



Thomas Stephens is a Transportation Systems Analyst at Argonne National Laboratory, where his work focuses on assessing energy use and emissions from advanced-technology vehicles as well as their potential costs and market potential. He has a PhD in Chemical Engineering from the University of Massachusetts. In 2015 he received the DOE Vehicle Technologies Distinguished Achievement Award for economic, market, and integrated vehicle technology analysis.



Aymeric Rousseau is the Manager of the Vehicle Modelling and Simulation Section at Argonne National Laboratory. He received his engineering diploma at the Industrial System Engineering School in La Rochelle, France, in 1997. After working for PSA Peugeot Citroen in the Hybrid Electric Vehicle Research Department, he joined Argonne National Laboratory in 1999, where he is now responsible for the development of Autonomie. He received an R&D 100 Award in 2004 and a 2010 Vehicle Technologies Program Award in 2010. He has authored more than 40 technical papers in the area of advanced vehicle technologies.